

Creating a Secure FTP Server with FreeFTPd

1. Download and install Free FTPD from www.freeftpd.com.

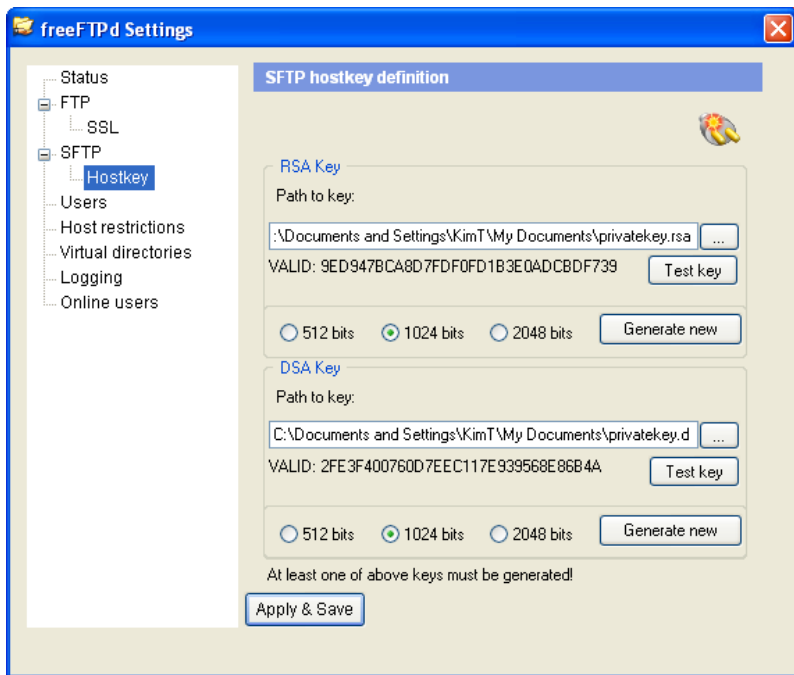
Accept all defaults.

When asked if you want to setup as system service, YES (this means the sftp runs automatically even after rebooting PC).

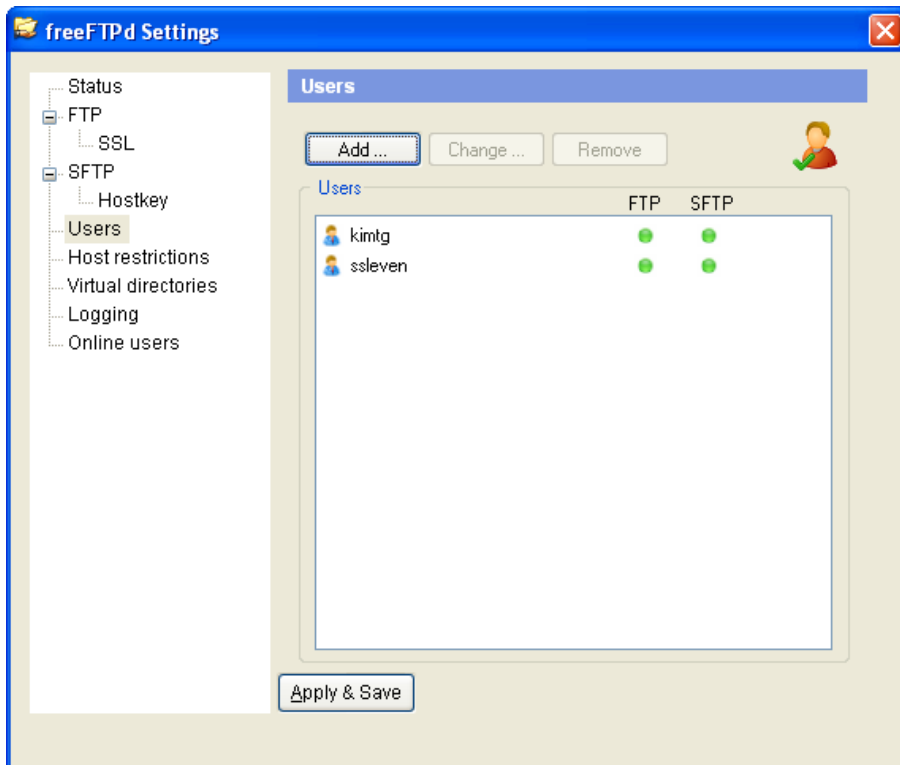
This settings screen will be displayed.

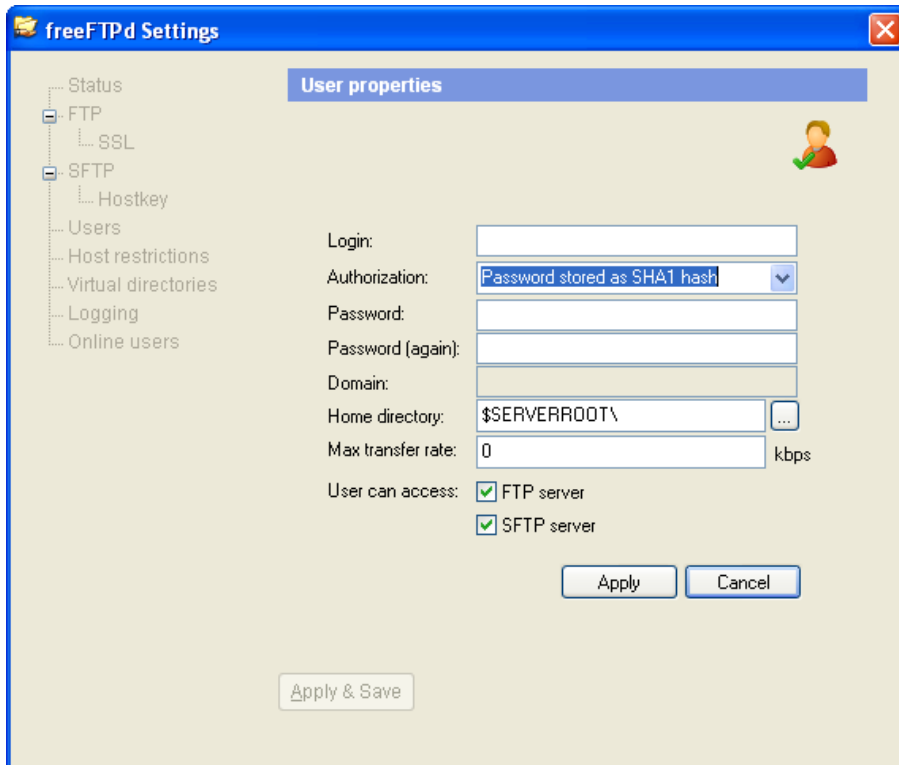


2. Click on **Hostkey** under SFTP. Click "**Generate new**" under both **RSA Key** and **DSA Key**. Then Click **Apply and Save**.

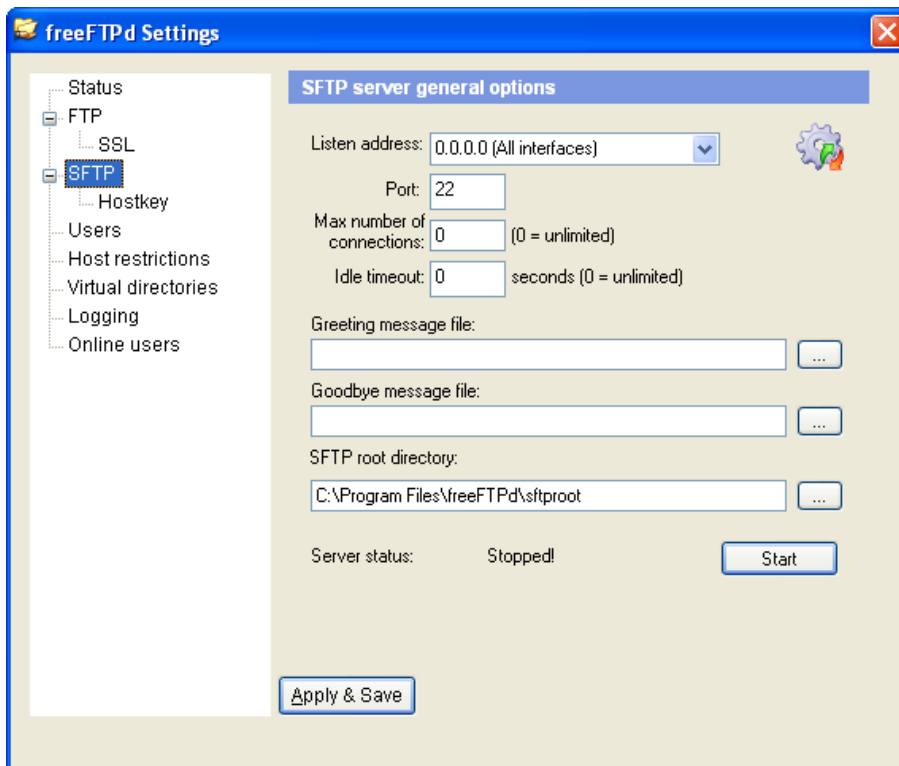


3. Click on **Users**. Create user using authentication mode 'Password stored as SHA1 hash'
 - a. Make sure to check SFTP server under 'user can access'





4. Verify under SFTP node that Listen address is either the machine IP or 0.0.0.0
If SFTP already running, stop.
5. Start SFTP



6. Final Steps:

1. Configure your router to direct incoming SFTP requests to this computer. (This varies by router, and may be called Port Forwarding, Gaming, Virtual Servers, etc. Consult your router manual). Forward port 22 to the internal IP address of this computer.
2. Configure your computer firewall to accept incoming requests for port 22 and/or FreeFTPD.exe. (This varies by firewall type.) For Windows XP SP2 firewall, go to **Start / All Programs / Accessories / System Tools / Security Center**. Click on **Windows Firewall** at the bottom of the screen. Click on the **Exceptions** tab. If **freeFTPd** is in the list, click to put a checkmark beside it and click **OK**. If it is not on the list, click **Add Program**, and select it from the list. If it is not in that list, click **Browse** and find it. Once it is selected, it should have a checkmark beside it and you can click **OK** and then exit the Windows Firewall and Security Center.
3. Provide your **ISP-provided static IP address**, incoming router port number (if other than 22), and user/password to Transcription Relief.